

**EGELSTON TOWNSHIP PARKS & RECREATION PLAN**

**2019-2024**

## TABLE OF CONTENTS

	PAGE
ACKNOWLEDGEMENTS	1
INTRODUCTION	2
COMMUNITY PROFILE	3-4
TRANSPORTATION	5
ADMINISTRATION STRUCTURE	6
APPLE AVE. (M-46) AVG. DAILY TRAFFIC COUNT (MAP)	7
SATELLITE PICTURES OF TOWNSHIP PARKS	8-14
SUNSET BEACH	8
PINERIDGE PARK	9
GIDDINGS FIELD	10
FLICKEMA PARK	11
HOLIDAY PARK-NORTH	12
HOLIDAY PARK-SOUTH	13
BEALS PARK	14
ACCESSIBILITY GUIDELINES TO PARKS	15
A) EGELSTON TOWNSHIP	
B) MICHIGAN STATE PARKS	
DEFICIENCIES ANALYSIS	15-16
PUBLIC INPUT	16
RECREATION GOALS AND OBJECTIVES	17-19
PROPOSED TOWNSHIP PARK IMPROVEMENTS	20
ACTION PLAN	21-24
ZOHO SURVEY RESULTS	25-40

## Acknowledgements

### **Egelston Township Planning Commission**

Shawn Vanderstelt, Chairman

Cariann Avery, Secretary

Robert Coon, Trustee

Don Darke, Trustee

Sheila Quillin, Trustee

### **Egelston Township Board**

John Holter, Supervisor

Joan Rapp, Clerk

Kelly Giddings Gerard, Treasurer

Bob Coon, Trustee

Brent Hartman, Trustee

Renea Foster, Trustee

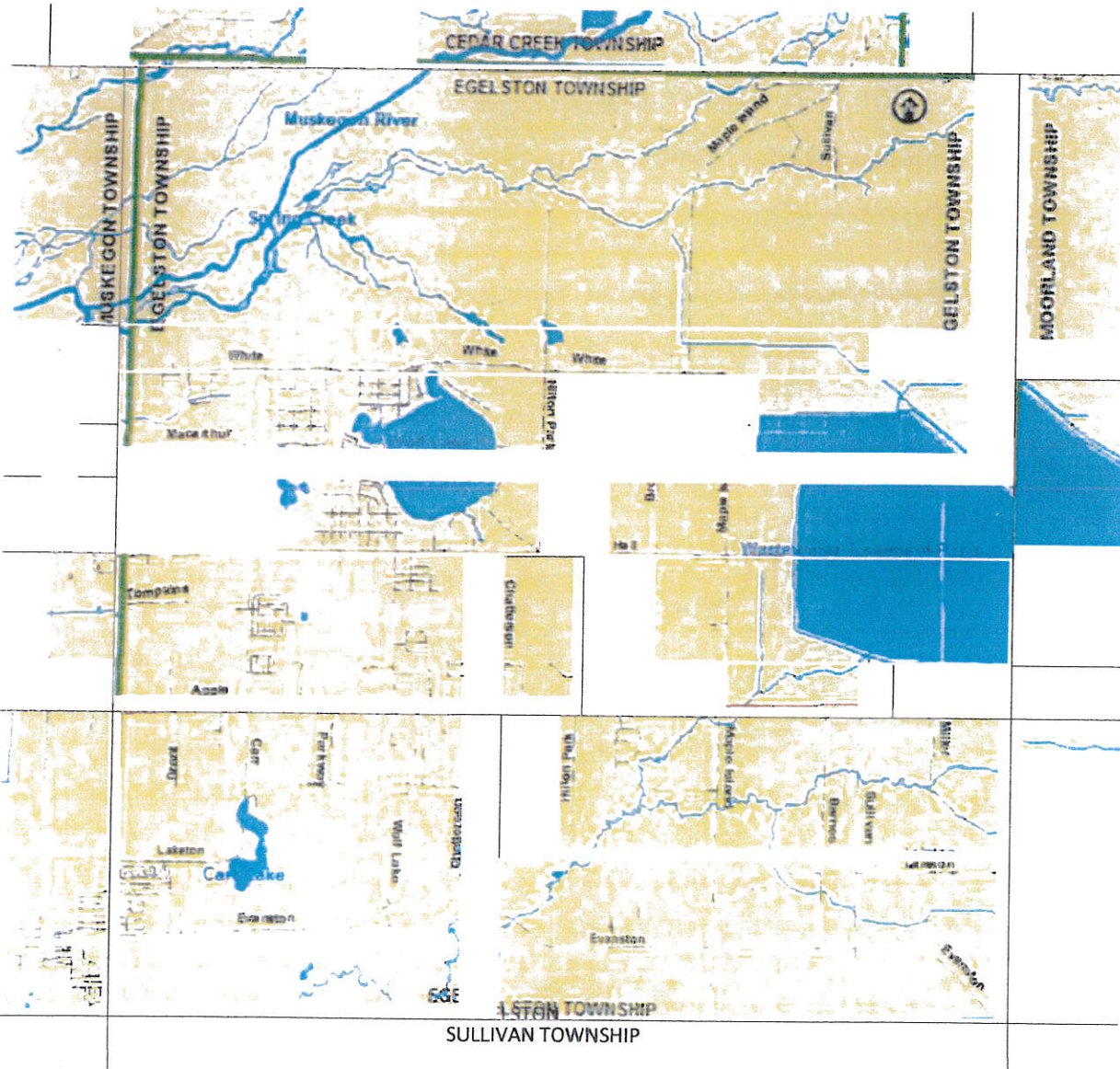
Alex Maginity, Trustee

The residents of Egelston Township.

## INTRODUCTION

This document was updated in 2018 for Egelston Township by the Egelston Planning Commission and subsequently submitted for approval to the Egelston Township Board for incorporation with the Township Master Plan. The plan aims to provide a baseline plan for addressing Egelston Township's short-range and long-range recreational needs and opportunities.

The content of the plan is structured around the requirements outlined in the MDNR (Michigan Department of Natural Resources) document titled "Guidelines for the Development of Community Park, Recreation, Open Space, and Greenway Plans " (Rev 01/27/2006).



## COMMUNITY PROFILE

### Location

Egelston Township is located in Muskegon County approximately five miles east of the City of Muskegon and thirty miles northwest of the City of Grand Rapids. It is located less than four hours traveling time from Detroit and Chicago. The Township is traversed by State Highway M-46 (Apple Avenue), and is roughly three miles east of the US-31 expressway.

### Population

According to the 2010 Census, there were 9909 persons living in the Township. This represents a 3.8% increase over the 2000 population of 9537 persons. Egelston Township ranks third out of five townships in Muskegon County having populations of more than 6,000 people. Fruitport and Muskegon Township 2010 populations were 13,598 and 17,840 respectively. Dalton and Laketon Township populations were 9300 and 7,563 respectively.

Egelston Township's growth rate is expected to continue given the current building permit activity and the amount of available undeveloped land.

POPULATION GROWTH TRENDS, 2000 TO 2010  
Egelston Township and Surrounding Communities

	1980	1990	1980- 1990 Change	2000	1990- 2000 Change	2010	2000- 2010 Change
Egelston Township	7,310	7,640	5%	9,537	25%	9,909	3.8%
Muskegon Township	14,557	15,302	5%	17,737	16%	17,840	.6%
Dalton Township	5,897	6,276	6%	8,047	28%	9,300	13.5%
Fruitland Township	4,168	4,391	5%	5,235	19%	5,543	5.6%
Cedar Creek Township	2,454	2,846	16%	3,109	8%	3,186	2.5%
Moorland Township	1,521	1,543	3%	1,616	5%	1,575	2.6%
Sullivan Township	2,356	2,230	5%	2,477	11%	2,441	1.5%
Muskegon County	157,589	157,983	1%	170,200	7%	172,188	1.2%
State of Michigan	9,258,344	9,536,094	.3%	9,938,444	4%	9,983,640	.59%

### Age

The median age in Egelston Township is 37.1 years of age, same as Muskegon County. Approximately 27 percent of the population is under 18 years of age. The "family forming" group, ages 20-44, comprises 31 percent of the population. These two age groups comprise 58 percent of the Township's population and require organized sports and areas for family recreation. The maturing segment of the population, those 45 years of age and older, comprise 39% of the population, 12% of which are senior citizens.

## Gender

The Township's population is composed of 4,853 males and 5,056 females.

## Race

The table below illustrates the racial composition of the Township's population. The community has a lower minority population than Muskegon County and the State of Michigan.

POPULATION BY RACE  
Egelston Township using 2010 census.

COMMUNITY	% WHITE	% BLACK	% AMERICAN INDIAN ALASKAN NATIVE	% ASIAN OR PACIFIC ISLANDER	OTHER
Egelston Twp.	93.1%	1.2%	1.1%	.40 %	4.2%
Muskegon Co.		14.5%			4.2%
Michigan	78.9%	14.2%		2.4%	3.9%

## Income

Based on 2012 – 2016 American Community Survey, the Township's median household income was \$41,423. Muskegon County was at \$43,920 and the State of Michigan was at \$50,803.

## Persons Per Household

Based on 2010 Census data, the number of persons per household in the Township (2.73 persons) is slightly higher than the County or State (2.53 persons). This may be attributable to a larger number of families with school age children, and the lower median housing value, which may cause housing to be more affordable to young families.

## Poverty Status

Based on 2012 – 2016 American Community Survey, 21 percent of the population lives at or below the poverty level. This figure is slightly higher than Muskegon County at 19.6 percent and moderately higher than the statewide poverty status of 16.3 percent.

## Employment Trends

Based on 2012 – 2016 American Community Survey, the community had 7,631 persons in the labor force. This figure comprises of 2,880 males and 2,985 females. Of all persons in the labor force, 4,589 were classified as being employed, resulting in a 2012-2016 unemployment rate of approximately 12.7 percent. The 2012-2016 unemployment rate for Muskegon County was 10.4 percent.

## Persons with Disabilities

Based on 2000 Census data, 140 persons (5.6% of the age group) between the ages of 5 and 20 were reported as having a mobility or self-care disability. Of all persons 65 years of age and older, 463 (49.9% of the age group) were reported as having a mobility or self-care disability. The Township will strive to meet the needs of this group by bringing all facilities into compliance with the Americans with Disabilities Act, and by providing barrier free access to all park facilities.

## TRANSPORTATION

Egelston Township is served by a system of state, county and local roads. Apple Avenue (M46) is the only State truck line in the Township. County primary roads include Wolf Lake, Maple Island, Evanston, and White Roads, and segments of Carr and Laketon. The remaining roadways in the Township are designed as either Local-County or Local Township. The Transportation map shows the locations and layout of Egelston Township roads.

Apple Ave (M46) is the most heavily traveled road corridor in the Township, according to the Michigan Department of transportation (MDOT) , the most recent 24 hour volume recorded was 18,800 directly west of Wolf Lake Road and 12,168 directly east of Wolf Lake Road.

## Administrative Structure

Egelston Township Planning Commission is responsible for the development of the townships parks and recreation plan. The Planning Commission is comprised of 5 township citizens recommended by the township supervisor and approved by the township board.

The Planning Commission works to create short and long term goals for the township. The Planning Commission meets monthly. The commission meetings are open for public attendance.

Typically the chairman and other members of the commission will attend all of the township meetings to present recommendations and answer any questions that may arise. The commission is not directly responsible for distribution or collection of any funding; all finances are handled by the township with input and recommendations from the Planning Commission.

Egelston Township is a general law township that is governed by full and part time elected officials. The Township Board of Trustees consist of supervisor, clerk, treasurer and (4) trustees.

There is also a Department of Public Works (DPW) that consist of a supervisor and 3-4 full time employees who are charged with maintaining the parks.

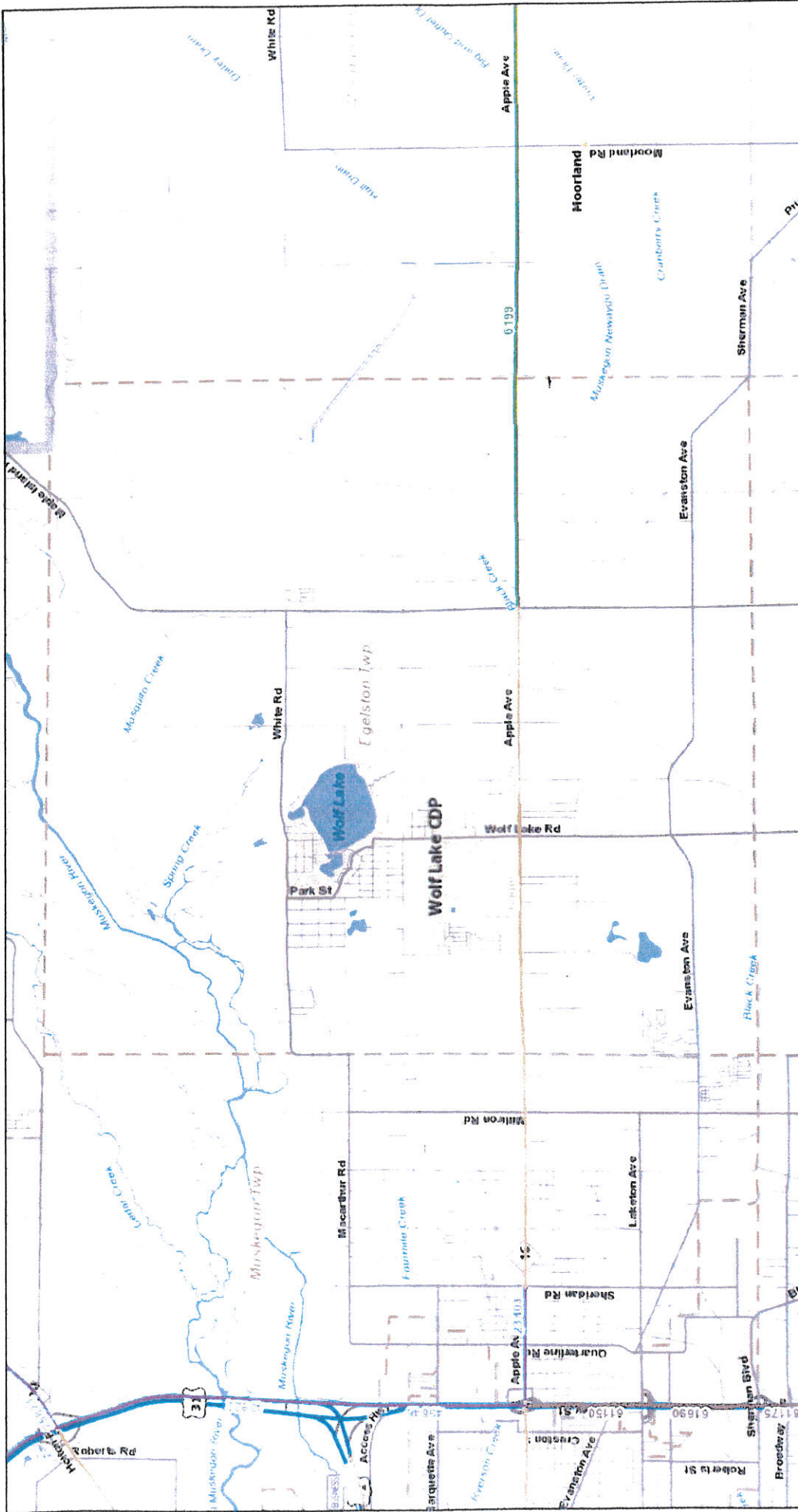
Funding for Parks and Recreation is drawn from the township general fund and any grant monies received. On occasion small projects will be paid for by the Festival Committee.

Several groups volunteer time and money to make additional improvements to the parks. The Baseball, Football and Soccer clubs are all active within Township Parks and the School District parks, having contributed equipment, materials and time for park improvements.

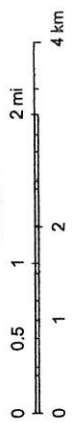
The Planning Commission does not work directly with Oakridge School District Facilities. However information flows freely between the township and the school district to help prevent overlapping services.



# Egelston Township (M-46) average daily traffic count



1:52,689



April 13, 2018

- AADT
- 1 - 2,000
  - 2,001 - 5,000
  - 5,001 - 10,000
  - 10,001 - 20,000
  - 20,001 - 50,000
  - 50,001 - 100,000
  - Over 100,000

# Sunset Beach

Addition parking

Extended Parking Lot

Legend

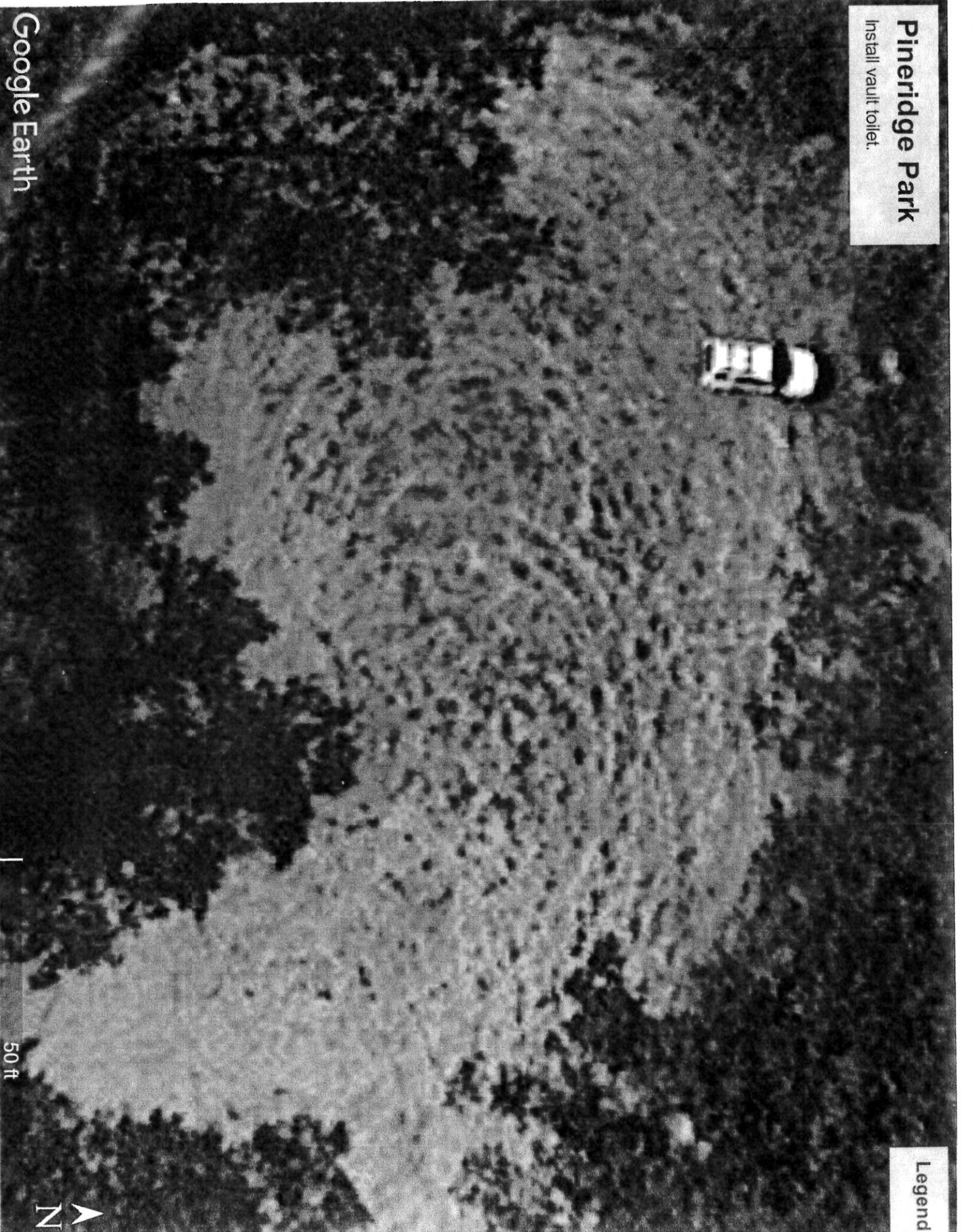
Google Earth

200 ft



**Pineridge Park**  
Install vault toilet.

Legend



Google Earth

50 ft



# Flickema Park

Resurface Court  
Install retractable Tennis Nets  
Add Additional Gravel Parking

Additional Gravel Parking (no tree removal)

Resurface Court

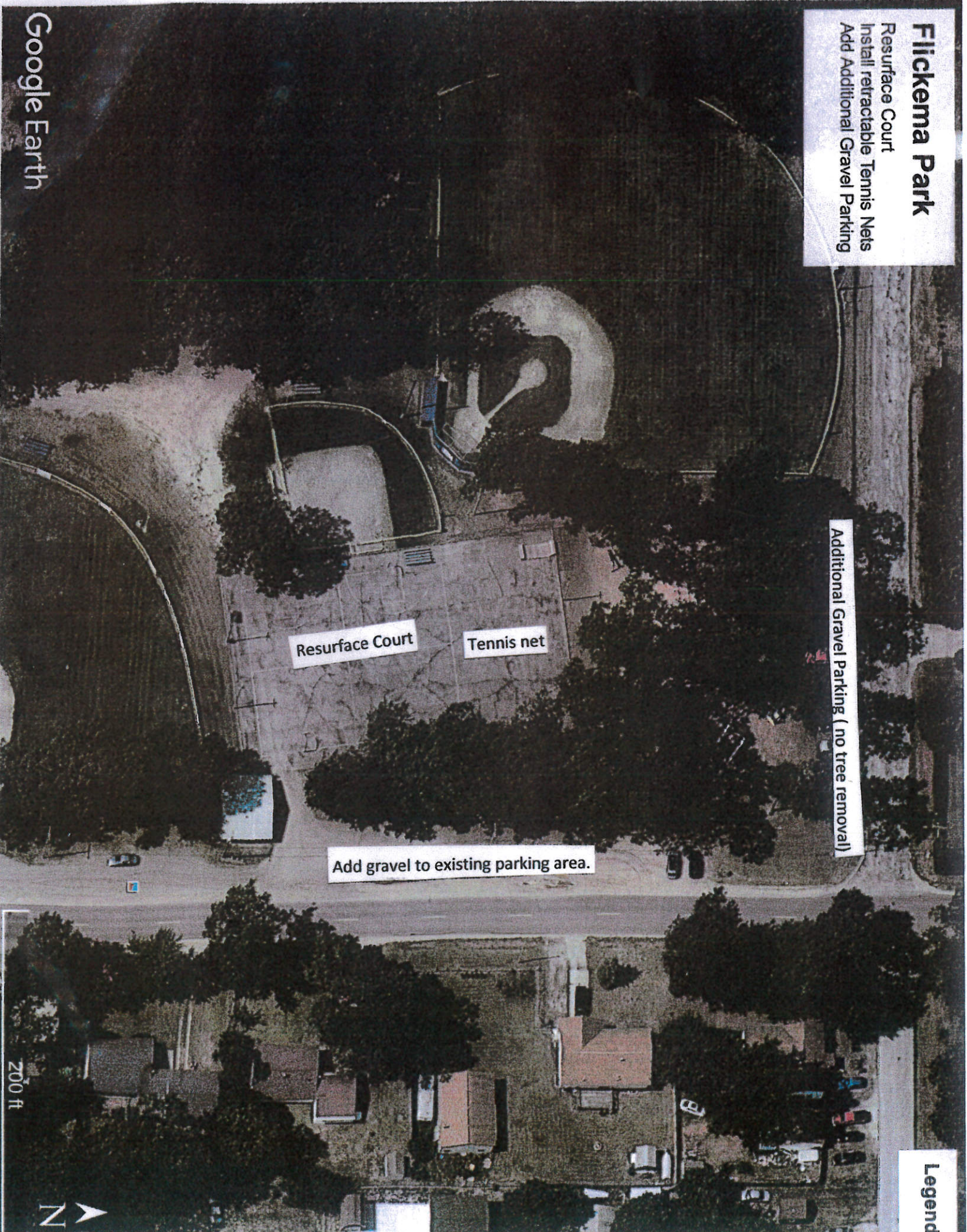
Tennis net

Add gravel to existing parking area.

Legend

Google Earth

200 ft

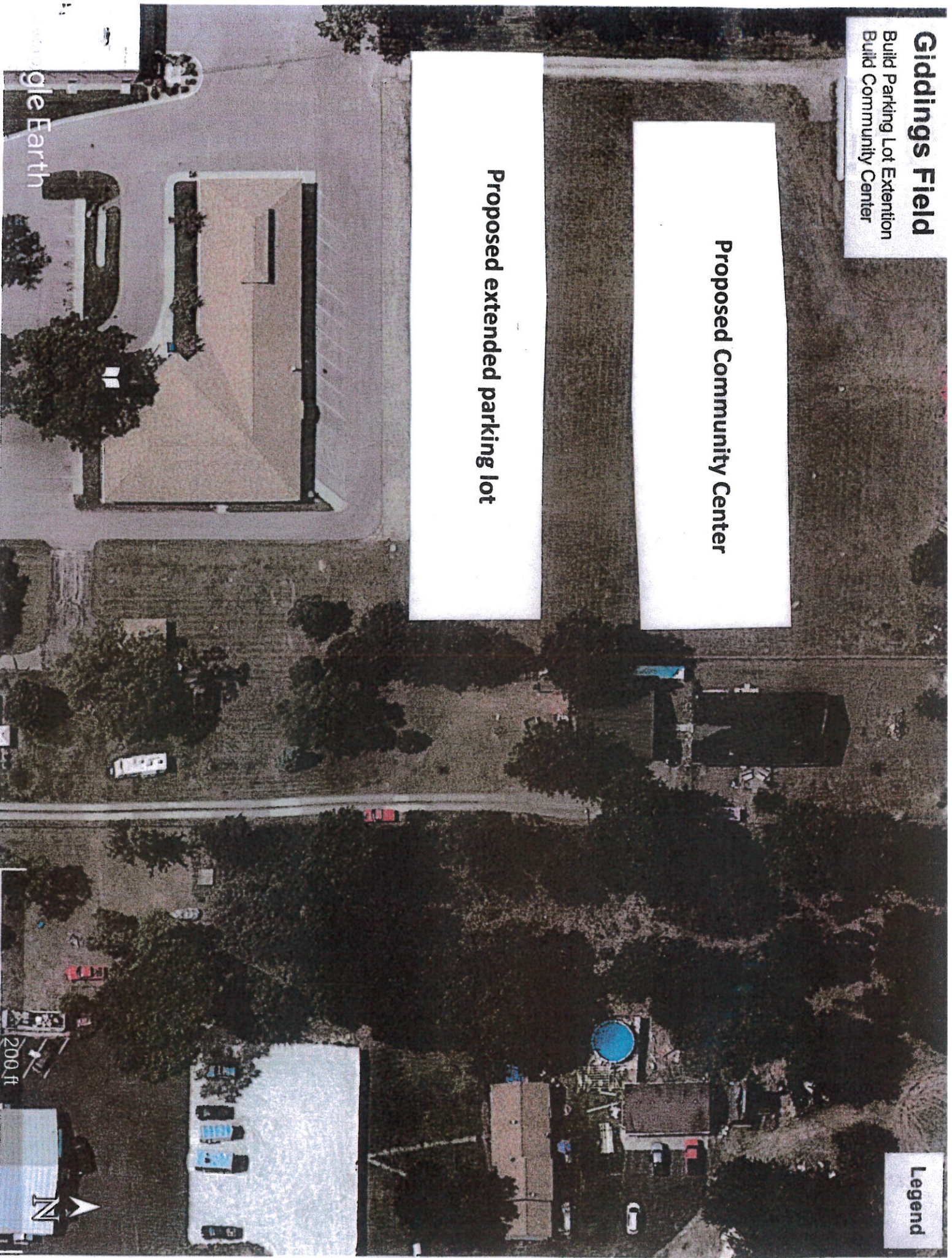


**Giddings Field**  
Build Parking Lot Extension  
Build Community Center

**Proposed Community Center**

**Proposed extended parking lot**

**Legend**



Google Earth

200 ft



# Holiday Park South

Proposed Pavilion/Farmers market  
Proposed addition Parking.  
Retractable Tennis net.

Proposed Gravel Parking

Lot

Proposed Gravel Parking

Proposed Gravel Parking

Proposed Gravel Parking

Proposed Pavilion  
And  
Farmers Market  
Proposed Gravel Drive

Legend

Google Earth

200 ft



# Holiday Park North

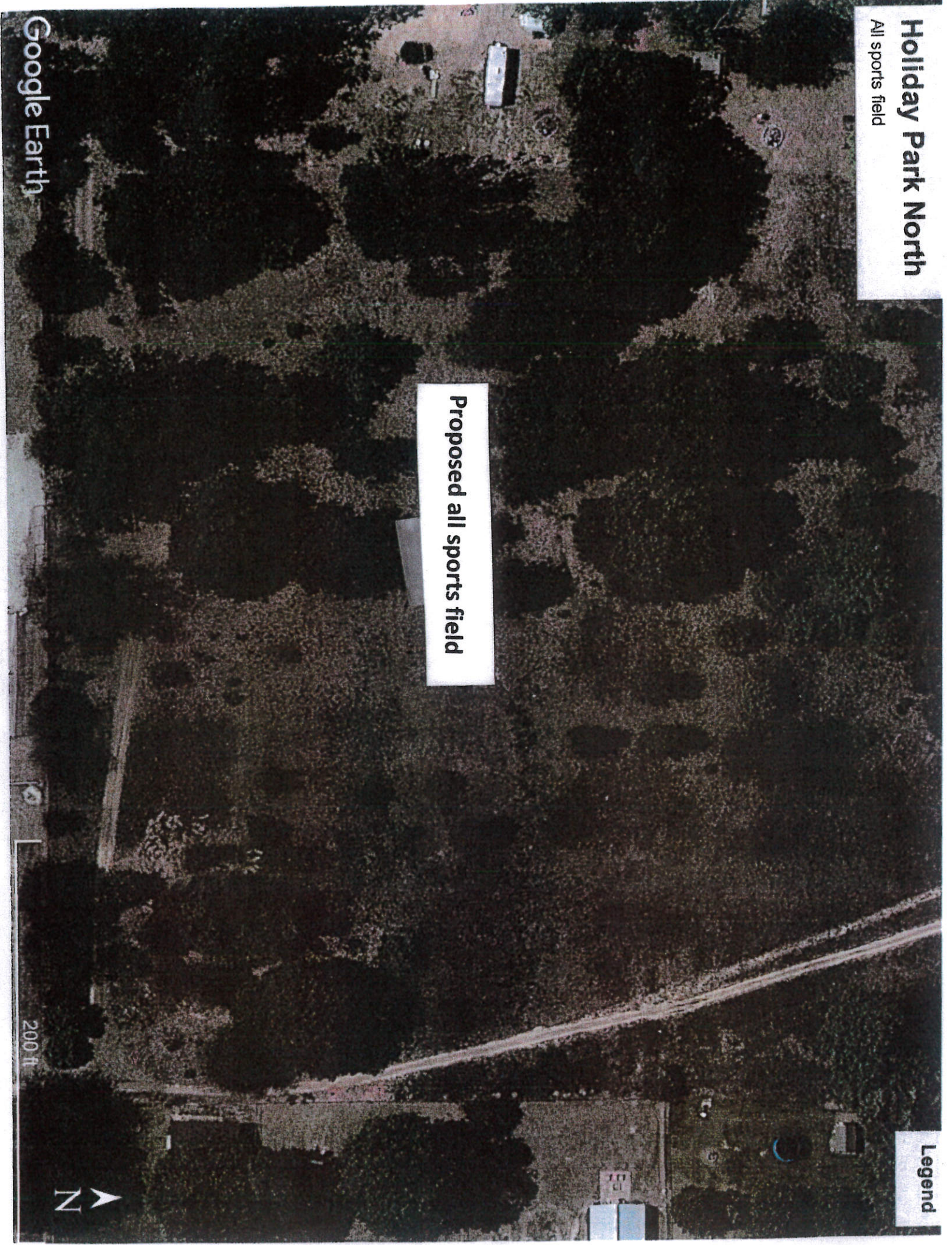
All sports field

Proposed all sports field

Legend

Google Earth

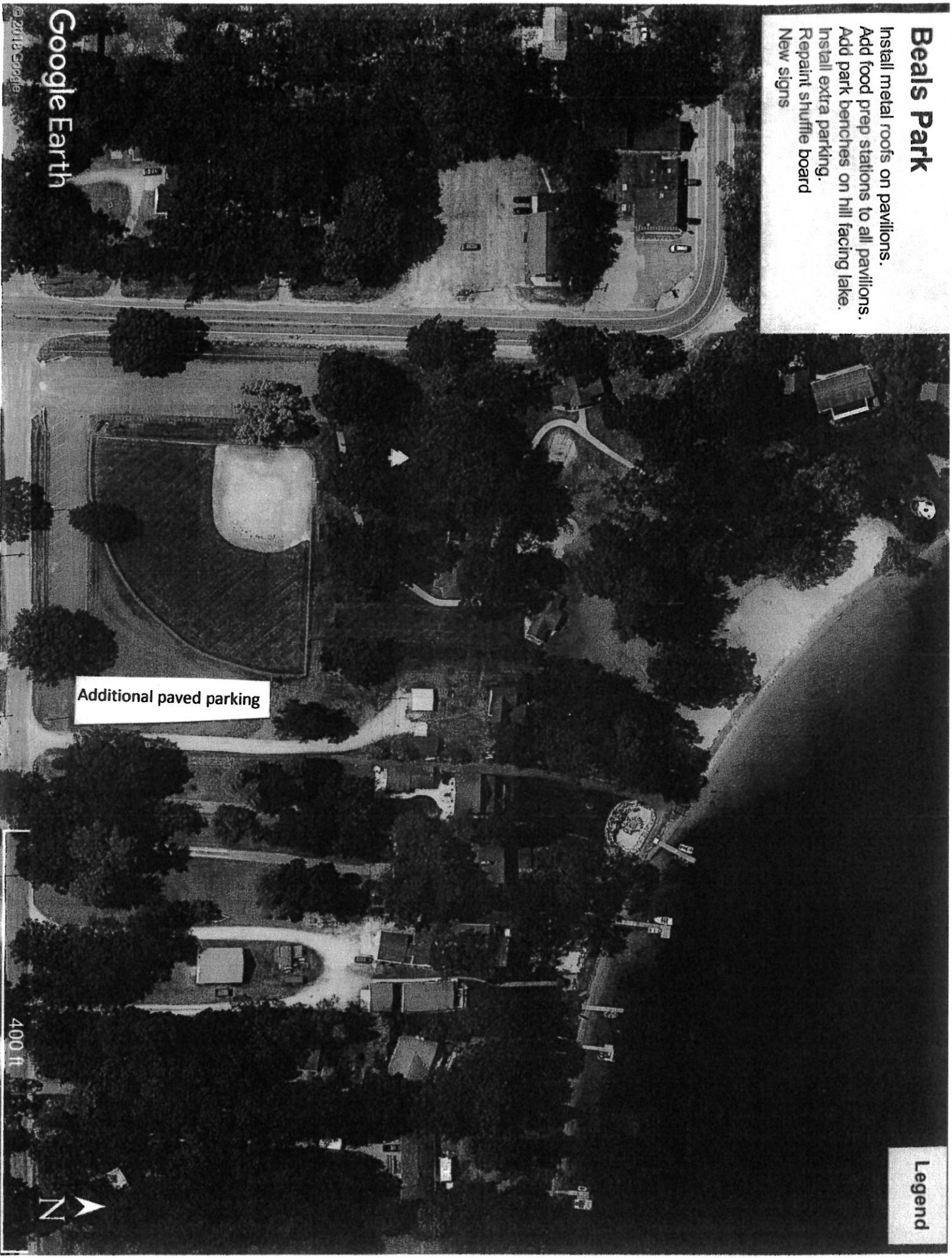
200 ft



# Beals Park

- Install metal roofs on pavilions.
- Add food prep stations to all pavilions.
- Add park benches on hill facing lake.
- Install extra parking.
- Repaint shuffle board
- New signs

# Legend



Additional paved parking

Google Earth

© 2018 Google

400 ft





**Accessibility**

Egelston Township parks were reviewed for accessibility with the following results:

- 1 = None or Few of the Accessibility Guidelines Are Met
- 2 = Some of the Accessibility Guidelines Are Met
- 3 = Most of the Accessibility Guidelines Are Met

Holiday Park.....	2
Flickema Park.....	2
Sunset Park.....	3
Giddings Field.....	2
Gayle Beals (Wolf Lake) Park.....	2
PineRidge Park.....	1

Findings indicated that Egelston Township parks are not currently meeting Accessibility Guidelines in most instances. Improvements to accessibility were included in the 5-year plan.

**State Parks**

Muskegon, Duck Lake, and Hoffmaster State Parks are located on Lake Michigan within the twenty mile service area for regional recreation facilities set by the State recreation facility standards. These State parks provide large natural areas, swimming, and camping. Muskegon State Park operates one of two Olympic-style luge runs in the United States. Hoffmaster State Park has an interpretive nature center with an exhibit hall and programs. Duck Lake State Park has a large swimming and beach area on Lake Michigan, as well as camping and picnicking facilities. There are many bicycle and walking trails through the County of Muskegon.

**DEFICIENCIES ANALYSIS**

The National Recreation and Parks Association (NRPA) has established population based recreation standards for the size and distribution of parks and recreation facilities. These standards suggest a community have certain numbers of activity-specific recreational facilities or acres of parkland per 1,000 of population (i.e., 1 tennis court per 2,000 persons).

The acreage and facility standards used in this plan have recognized the role of school acreage in meeting recreational needs, particularly at the playground and neighborhood levels, and in the area of specialized indoor facilities. This has been done by taking the schools into account in the facilities inventory.

***EGELSTON TOWNSHIP RECREATION INVENTORY***

ITEM	NRPA STAND ARD	EGELSTON STANDARD	EXISTING	SURPLUS OR (DEFICIENCY)
Basketball (outdoors)	1:5000	2	8	6
Tennis	1:2000	4	0	(4)
Volleyball	1:5000	2	0	(2)
Football	1:20000	1	2	1
Soccer	1:20000	1	3	2
Running track	1:20000	1	1	0
Ball fields			11	
Adult	1:5000	2	2	0
Youth	1:5000	2	8	6
Hiking trails (miles)	1:5000	2	1	(1)
Golf	1:25000	1	0	(1)

Swimming Pool indoors	1:20000	1	1	0
Gymnasium	1:5000	2	5	3
Grills	1:500	16	29	13
Shuffleboard	1:2000	4	2	2
Pavilions	1:2000	4	7	3
Picnic tables	1:200	39	68	29
Ice skating (outdoors)	1:20000	1	1	0
Local land acres	10:1000	100	37	63
Playgrounds	1:3000	3	7	4
Bike trails miles	1:4000	2	1	(1)
Sledding Hill			2	

1. Item required within Egelston Township to meet NRPA standards.
2. Private pool located at the Egelcraft Community Building, which is utilized by Oakridge Schools.
3. Does not reflect the Muskegon State game area Source: 2008 Recreation Inventory Field Inspection

### PUBLIC INPUT

Public input has been solicited in a number of ways for this Parks and Recreation Plan:

A draft of the Parks and Recreation Plan was made available to citizens and an open meeting was held to take comments on the plan with the public hearing of the Egelston Township Master Plan.

A survey was conducted in April, 2018. The survey consisted of 15 (15) questions aimed at providing citizen insight into parks and recreation functions. A sample survey is attached. Results of the survey are summarized below.

#### Community Needs

Discussions with Township residents and officials point out that while the standards may indicate that the amount or size of certain facilities are sufficient, they actually may suffer from overuse. On the same token, standards may have indicated a more pronounced need than is actually experienced. Citizens have expressed the desire to develop new recreation areas and further develop existing ones. Township officials also expressed a need to expand the bike trail throughout the Township and to connect to Muskegon County's existing trail. Also in need is to connect the existing sidewalk, bicycle trail on M-46 (Apple Avenue) west to Brooks Road and east to Maple Island Road. Also to construct a new sidewalk along Hall road from Wolf Lake Road west to Carr road.

The following table illustrates the needs and desires of the Egelston Township Community as presented during a Planning Commission focus group meeting and through the 2018 survey.

- \* Community Center
- \* Large Community Pavilion
- \* Bike Trail (10-15 Miles)
- \* Extended sidewalk/bicycle trail
- \* Tennis Courts
- \* Nature Trail extension

Egelston Township's population growth estimates point to a large growth trend over the next ten years. As mentioned in the "Population" section, Egelston is the third fastest growing township in Muskegon County. Therefore, one must anticipate future needs and design expanded services to accommodate a larger population that will put a greater demand on parks.

# Goals & Objectives

## Strategy

This plan will provide the basis for public policy decisions and technical coordination in recreation development of the Township.

The Township of Egleston's strategy is to provide a variety of parks that are flexible spaces that serve multiple users.

The goals and objectives were developed through the Planning Commission and incorporate recreation planning best practices and the results of the public input process.

Goal address general needs and establish the basis for setting specific programmed objectives. Objectives measure results that the community works towards accomplishing.

The Following Goals and objectives are numbered for identification purposes only. Each goal is considered to carry an equal degree of importance.

## Goal 1

### **Maintain Existing Community Parks And Recreation Facilities.**

- A. Maintain all recreation- related buildings, structures and parks.
- B. Repair and replace all won out and damaged equipment and amenities as necessary.
- C. Improve barrier free access to parks to comply with the requirements of the Americans with Disabilities Act.

## Goal 2

### **Expand And Develop New Parks and Recreation Facilities.**

- A. Acquire equipment and facilities to keep pace with current design and regulatory standards, as well as the recreation needs of the community
- B. Include a broad range of facilities currently lacking in the community.

- C. Respond to the desires of residents with regards to developing park facilities.
- D. Ensure the township population is served by a uniform distribution of recreational facilities.
- E. Provide facilities for park users of all ages.

### **Goal 3**

#### **Continue Development of Non- Motorized Transportation Routes.**

- A. Continue to improve sidewalk connection throughout the Township and promote non-motorized transit as a healthy transportation option.

### **Goal 4**

#### **Partner With Other Entities To Provide Recreational Opportunities**

- A. Partner with Oakridge School District to ensure public access to school campus facilities.

### **Goal 5 Maintain And Improve The Natural and Aesthetic Qualities Of Parks**

- A. Develop partnerships (i.e. Academic and non-profit organizations) for design assistance to incorporate natural features into park design.
- B. Enhance and expand the views to water bodies, woodlands and wetlands from right-of -way and non- motorized pathways.
- C. Link open space areas to maintain wildlife and native plant corridors.
- D. Apply waterfront protection measures to Wolf lake including erosion control and shoreline naturalization.

### **Goal 6 Maintain Fiscal Responsibilities**

- A. Seek additional funding from outside sources for capital improvements, such as state and federal agencies and foundations.
- B. Incorporate volunteers in projects when feasible to help maintain and monitor park and recreation facilities.